

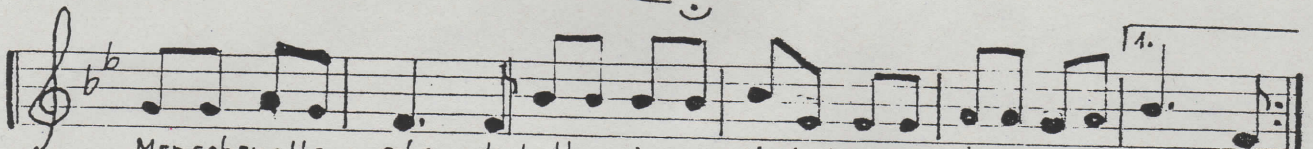
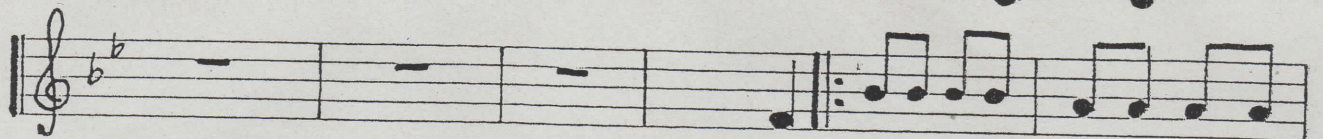
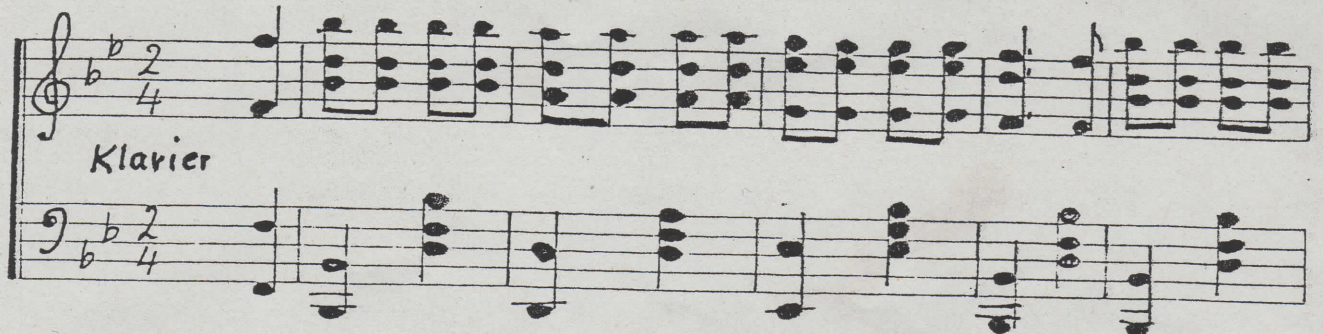
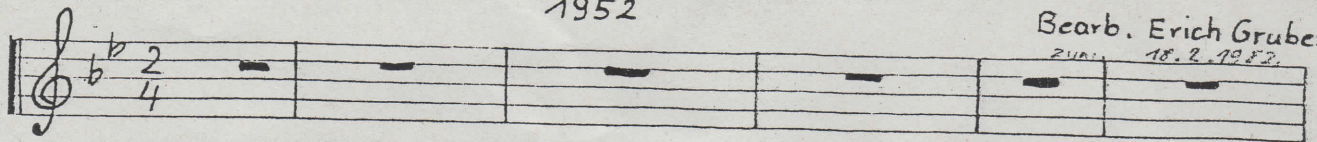
Sauwadellied Nr. 1

1952

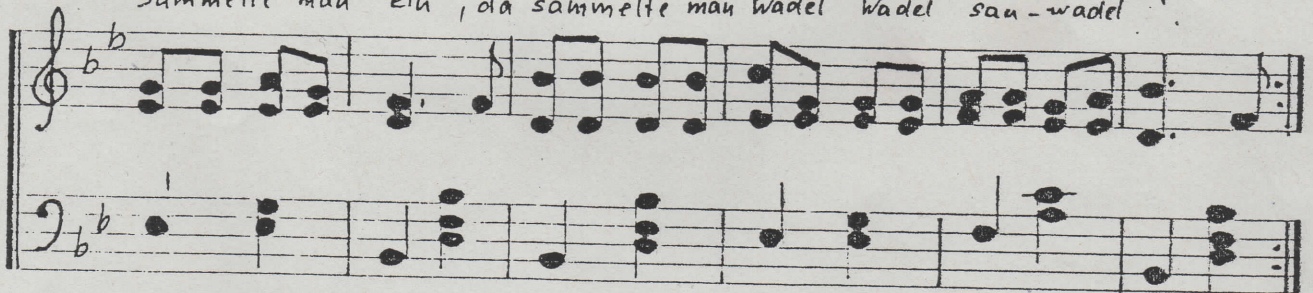
W.+S. Robert Dieck

Bearb. Erich Gruber

Zinn: 18.2.1952



Menschenalter schon, da hatten ein paar Liederkranzler einen in der Kron in
sammelte man ein, da sammelte man Wadel Wadel sau-wadel



ein Ja wa - rum Ja wa - rum wa - rum wa - rum Das



Handwritten musical notation for the song "Schönste Stück das". The notation is on a single staff with a treble clef and a key signature of one flat (B-flat). The melody consists of a series of eighth notes. The lyrics "schönste Stück das" are written below the staff, repeated three times.

schönste Stück das schönste Stück das schönste Stück das

A handwritten musical score for the song 'The Rose Tree'. The score is written on two staves. The top staff is in treble clef and the bottom staff is in bass clef. Both staves have a key signature of one flat (B-flat). The music is written in a simple, handwritten style. The top staff begins with a treble clef, a key signature of one flat, and a double bar line. The melody is written in a series of eighth and sixteenth notes. The bottom staff begins with a bass clef, a key signature of one flat, and a double bar line. The bass line is written in a series of eighth and sixteenth notes. The music is written in a simple, handwritten style.



Schwein das kann ja nur das kann ja nur der Sauwadel sein Das

A handwritten musical score for the song 'The Rose Tree'. The score is written on two staves, a treble staff on top and a bass staff on the bottom. Both staves are in the key of B-flat major, indicated by two flat symbols (B-flat and E-flat) at the beginning of each staff. The treble staff contains a melody with various note values, including quarter, eighth, and sixteenth notes, as well as rests. The bass staff provides a harmonic accompaniment, primarily using chords and single notes. The handwriting is in dark ink on aged, slightly yellowed paper. The title 'The Rose Tree' is written in a cursive script at the top left of the page.